

#### CONSTRUCTION NOTES:

- 1 Contractor shall comply with the current International Residential Code, all state and local
- 2 These drawings shall be reviewed and approved
- 3 Design live loads:
 

Roof	30 psf
Ceiling	20 pfs
Living Area Floor	40 psf
Sleeping Area Floor	30 psf
Deck	60 psf
- 4 Wind loads with a equivalent basic wind speed of 100mph with 3 secod wind bursts of 120 mph. Building construction and windows shall meet
- 5 While every attempt has been made in the preparation of this plan to avoid mistakes, there is no guarantee against human error. The

#### ABBREVIATIONS

ALUM	ALUMINUM
CEIL'G	CEILING
CHCK	CHECK
CONC	CONCRETE
DIA	DIAMETER
ELEV	ELEVATIONS
HT	HEIGHT
FIN	FINISH
FL	FLOOR
FDN	FOUNDATION
HDR	HEADER
INSUL	INSULATION
JST	JOIST
O/C	ON-CENTER
PLYWD	PLYWOOD
RFTER	RAFTER
TOF	TOP OF FOUNDATION
W/	WITH
WD	WOOD

#### SHEET DESCRIPTION

G1	GENERAL NOTES
GA	DOOR & WINDOW SCHEDULES
A1	BASEMENT FLOOR PLAN
A2	FIRST FLOOR PLAN
A3	SECOND FLOOR PLAN
A4	ROOF PLAN
A5	ELEVATIONS
A6	SECTION BEDROOM
A7	SECTION
A8	SECTION
A9	SECTION
A10	SECTION
A11	SECTION
S1	FIRST FLOOR FRAMING PLAN
S2	SECOND FLOOR FRAMING PLAN
S3	ROOF FRAMING PLAN
S4	MISCELLANEOUS FRAMING

ADDITION FOR:  
THE SAMPLES  
1444 MAIN STREET  
SOUTH COUNTY, RI

DATE:  
JANUARY 19, 2026  
DRAWN BY:  
Hinigret Aerial, LLC

SHEET

G1

DOOR SCHEDULE									
ID	FLOOR	ROOM	TYPE	WIDTH	HEIGHT	JAMB	CONFIGURATION	HARDWARE	NOTES
1	First	Foyer	Exterior	36"	80"	7"	Simple Swing	Keyed Lockset	
2	First	Foyer Closet	Interior	32"	80"	4 1/2"	Simple Swing	Passage	
3	First	Foyer/Living	Interior	32"	80"	4 1/2"	Dbl Door Simple Swings	Passage	French glass doors.
4	First	Basement Stairs	Interior	32"	80"	4 1/2"	Simple Swing	Passage	
5	First	Laundry Rm	Interior	32"	80"	4 1/2"	Simple Swing	Passage	
6	First	Kitchen Door	Exterior	36"	80"	7"	Simple Swing	Keyed Lockset	
7	First	Closet	Interior	32"	80"	4 1/2"	Simple Swing	Passage	
8	First	Pantry	Interior	32"	80"	4 1/2"	Simple Swing	Passage	
9	First	Bedrrom	Interior	32"	80"	4 1/2"	Simple Swing	Passage	
10	First	Bath	Interior	32"	80"	4 1/2"	Simple Swing	Passage	
11	First	Closet	Interior	32"	80"	4 1/2"	Simple Swing	Passage	
12	Second	Bath	Interior	32"	80"	4 1/2"	Simple Swing	Passage	
13	Second	Hall Closet	Interior		80"	4 1/2"	Dbl Door Simple Swings	Passage	
14	Second	Bedroom 2	Interior	32"	80"	4 1/2"	Simple Swing	Passage	
15	Second	Bedroom 2 Closet	Interior		80"	4 1/2"	Dbl Door Simple Swings		
16	Second	Bedroom 3	Interior	32"	80"	4 1/2"	Simple Swing	Passage	
17	Second	Bedroom 3 Closet	Interior		80"	4 1/2"	Dbl Door Simple Swings		
NOTES:									
1 All doors shall be hung square and level properly installed to manufacture's instructions. Care shall be taken in handling, storage, installation and properly cleaned during final cleaning with any stickers removed.									

WINDOW SCHEDULE					
ID	CATALOG #	QTY	UNIT SIZE	GRILLS	NOTES
A	2817	6	2'-8 1/8" x 1'-7 3/8"	N	Basement utility window with window well as needed; Vinyl exterior
B	2852	11	2'-9 5/8"x 5'-4 7/8"	Y	Vinyl exterior wood interior finishes; Pararie grill;
C	Custom	1	2'-9 5/8"x 2'-9 5/8"	Y	Octagon shape; Vinyl exterior wood interior finishes; Standard grill;
D	CW-135	2	2'-4 3/8"x 3'-4 13/16"	Y	Vinyl exterior wood interior finishes; Pararie grill;
E	2832	3	2'-9 5/8"x 3'-4 7/8"	Y	Vinyl exterior wood interior finishes; Pararie grill;
NOTES:					
1 All windows shall be hung square and level properly installed to manufacture's instructions. Care shall be taken in handling, storage, installation and properly cleaned during final cleaning with any stickers removed.					
2 Windows: Perma-Shield windows with insect screens, manufactured by Andersen Corporation or equal.					

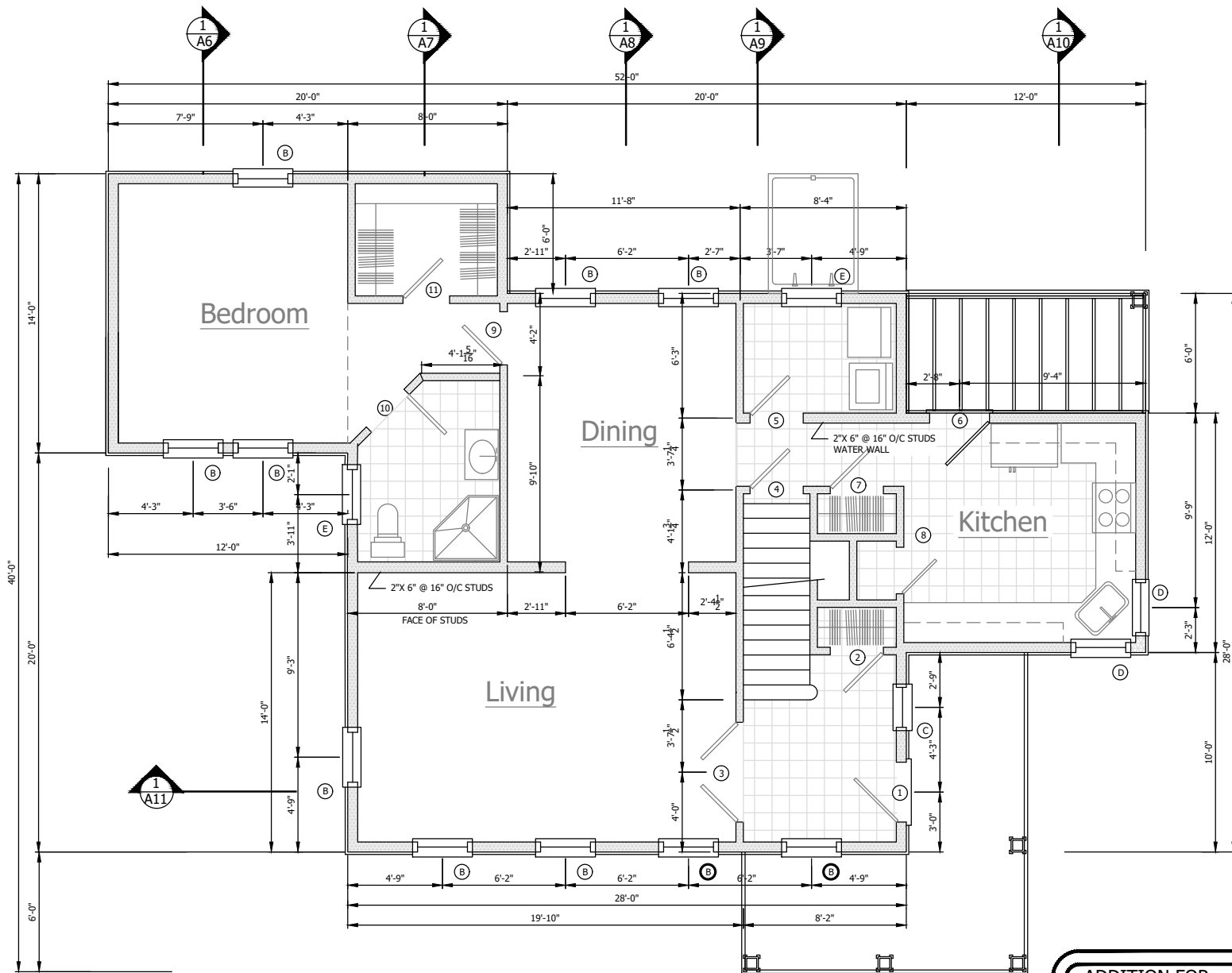
ADDITION FOR:  
THE SAMPLES  
1444 MAIN STREET  
SOUTH COUNTY, RI

DATE:  
JANUARY 19, 2026  
DRAWN BY:  
F. J. Minigret Aerial, LLC

SHEET

G2





# **CONSTRUCTION NOTES:**

- 1 Unless otherwise noted on plans, framing lumber spans are based on the use of Hem-Fir or equal having a modulus of elasticity of 1,400,000 or equal and a normal duration design value of  $f_b = 1100$ .
- 2 All exterior walls shall be 2" x 6" studding at 16" O/C. Corners shall be in compliance with International Residential Code Type 1 Braced Wall Panel construction.
- 3 All interior partitions shall be 2" x 4" studding at 16" O/C, unless otherwise specified on plans or specifications.
- 4 Dimensions are from exterior face of foundation and outside wall studs to center of partitions, unless otherwise noted.
- 5 All lumber in contact with concrete, used in decks, exposed to moisture or by codes shall be pressure preservatives treated.
- 6 Typical window and exterior door headers 2 Pcs 2"x 6" with 2- 1/2" Rigid insulation sandwiched between for header over windows or doors unless noted.
- 9 Install metal ties at all connections of floor joist to girders and sills; studs to top and bottom plates; plates to sill and rafters; and any other necessary points to meet flooding and wind load criteria.

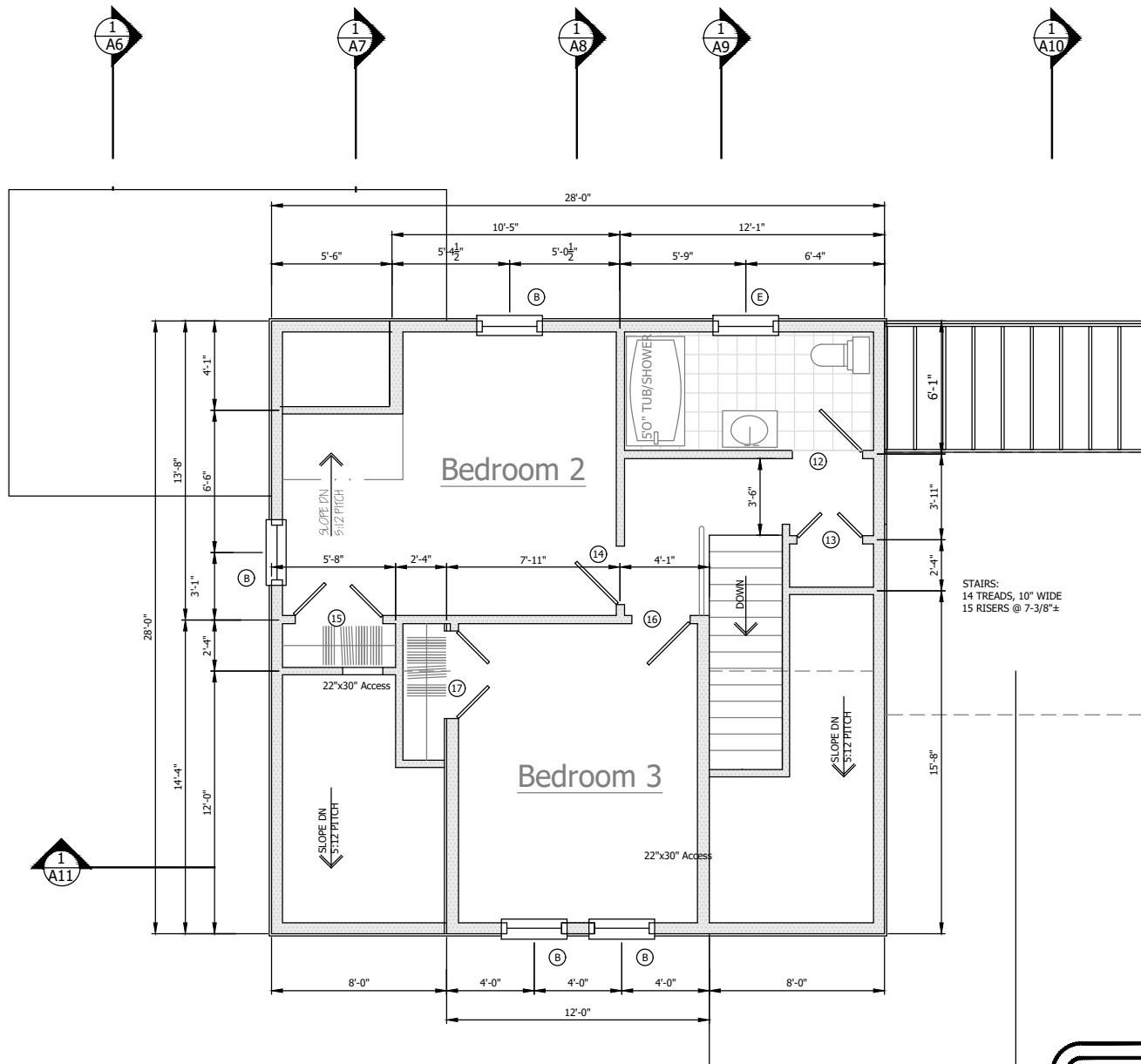
1  
A2 FIRST FLOOR PLAN  
SCALE: 3/16"=1'-0"

ADDITION FOR:  
THE SAMPLES  
1444 MAIN STREET  
SOUTH COUNTY, RI

DATE:  
JANUARY 7, 2026  
DRAWN BY:  
F. H. Hingret Aerial, LLC

SHEET

A2



1 SECOND FLOOR PLAN  
A3 SCALE: 3/16"=1'-0"

ADDITION FOR:  
THE SAMPLES  
1444 MAIN STREET  
SOUTH COUNTY, RI

DATE:  
JANUARY 7, 2026  
DRAWN BY:  
Hingret Aerial, LLC

SHEET  
A3

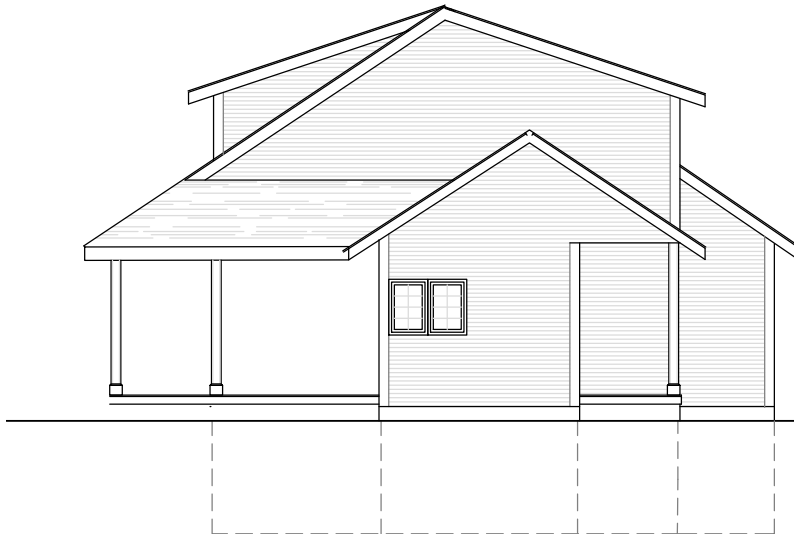




1 LEFT SIDE ELEVATION  
A5 SCALE: 1/8"=1'-0"



2 FRONT ELEVATION  
A5 SCALE: 1/8"=1'-0"



3 RIGHT SIDE ELEVATION  
A5 SCALE: 1/8"=1'-0"



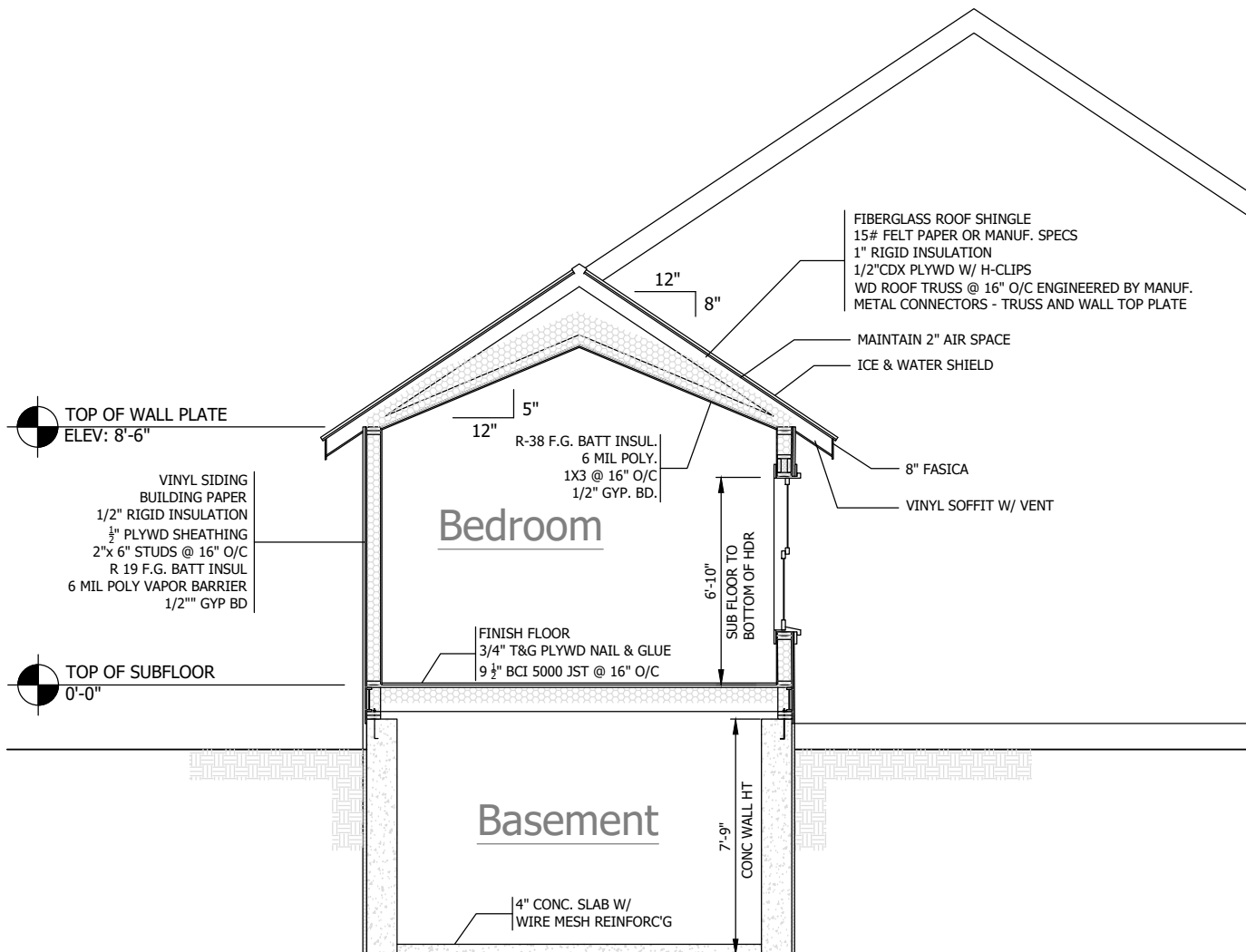
4 REAR ELEVATION  
A5 SCALE: 1/8"=1'-0"

ADDITION FOR:  
THE SAMPLES  
1444 MAIN STREET  
SOUTH COUNTY, RI

DATE: JANUARY 7, 2026  
DRAWN BY:  
Hilgret Aerial, LLC

SHEET

A5



1 CROSS SECTION  
A6 SCALE: 1/4"=1'-0"

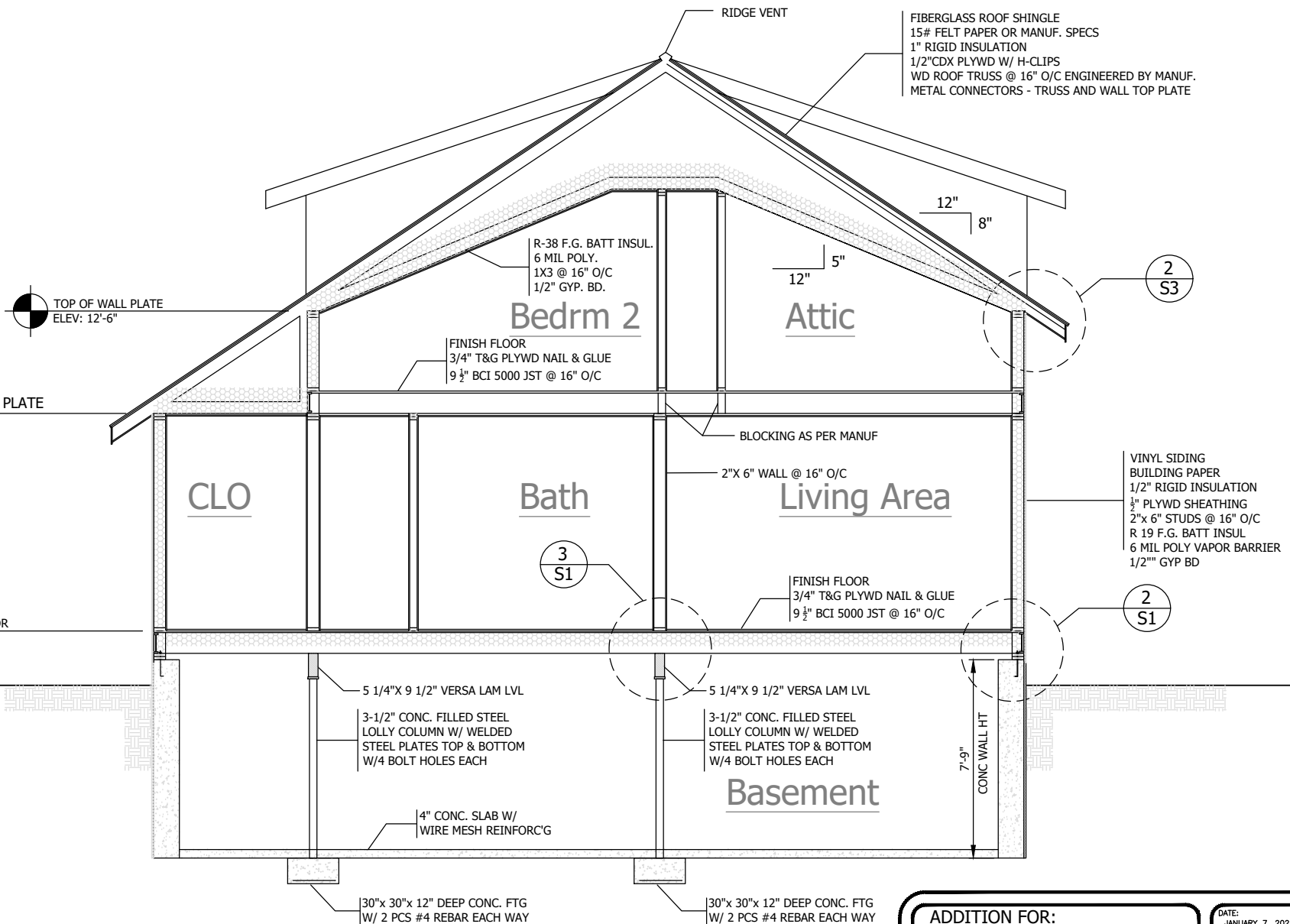
ADDITION FOR:  
THE SAMPLES  
1444 MAIN STREET  
SOUTH COUNTY, RI

DATE:  
JANUARY 7, 2026  
DRAWN BY:  
F&F  
Hingret Aerial, LLC

SHEET

A6





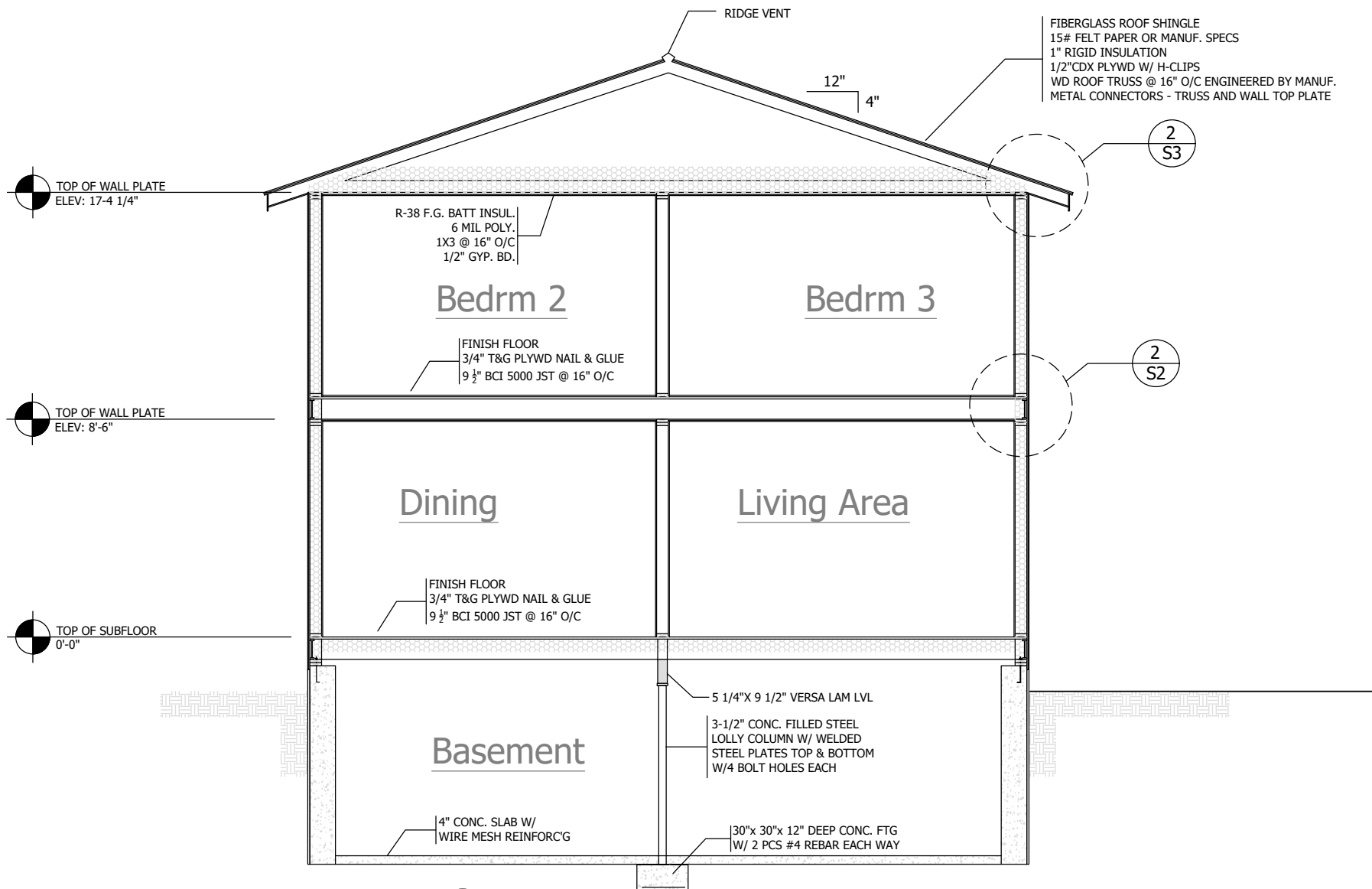
1  
A7 CROSS SECTION  
SCALE: 1/4"=1'-0"

ADDITION FOR:  
THE SAMPLES  
1444 MAIN STREET  
SOUTH COUNTY, RI

DATE: JANUARY 7, 2026  
DRAWN BY:  
Hingret Aerial, LLC

SHEET

A7



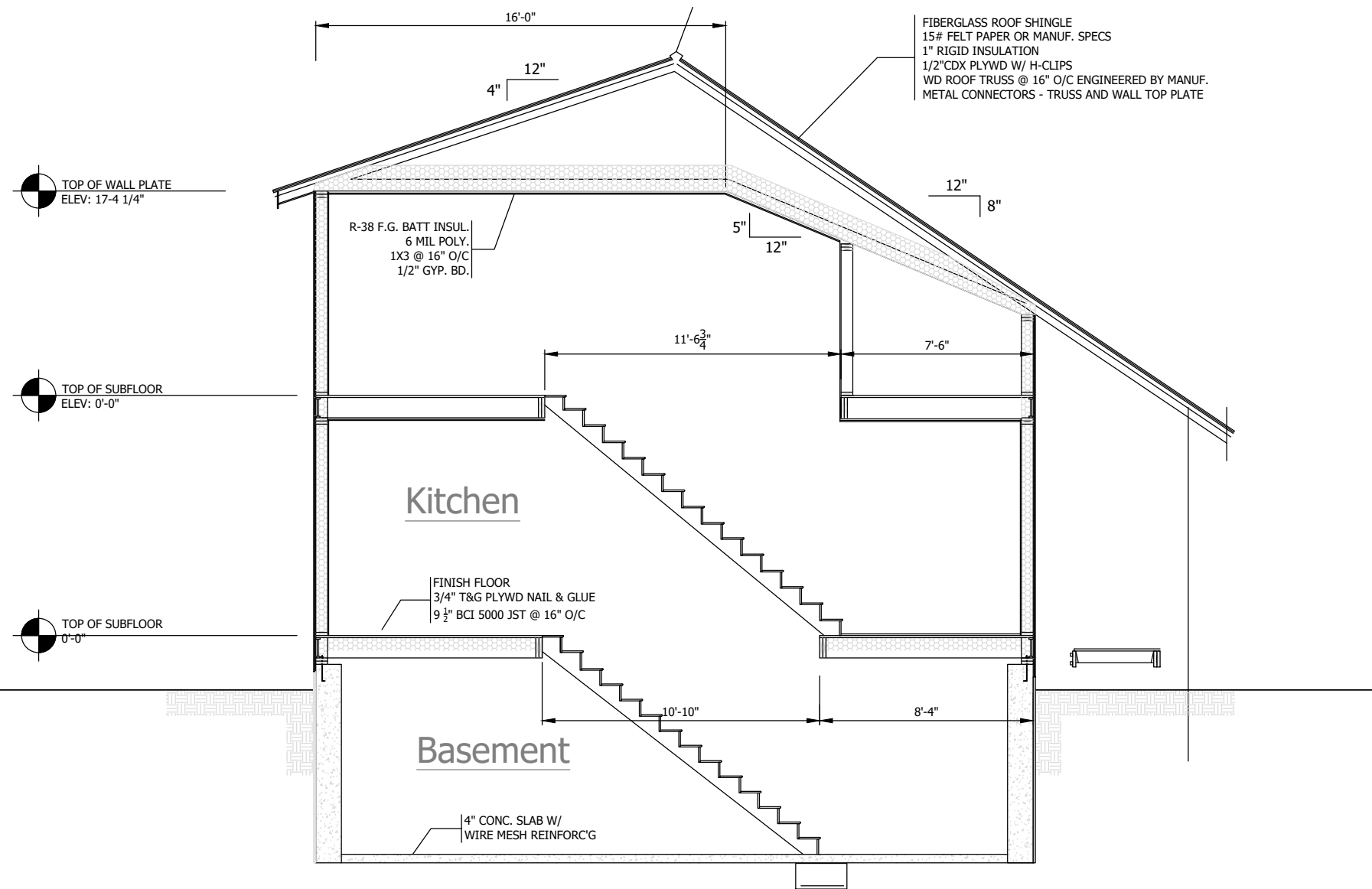
1 CROSS SECTION  
A8 SCALE: 1/4"=1'-0"

ADDITION FOR:  
THE SAMPLES  
1444 MAIN STREET  
SOUTH COUNTY, RI

DATE: JANUARY 7, 2026  
DRAWN BY:  
F&T  
Hingret Aerial, LLC

SHEET

A8



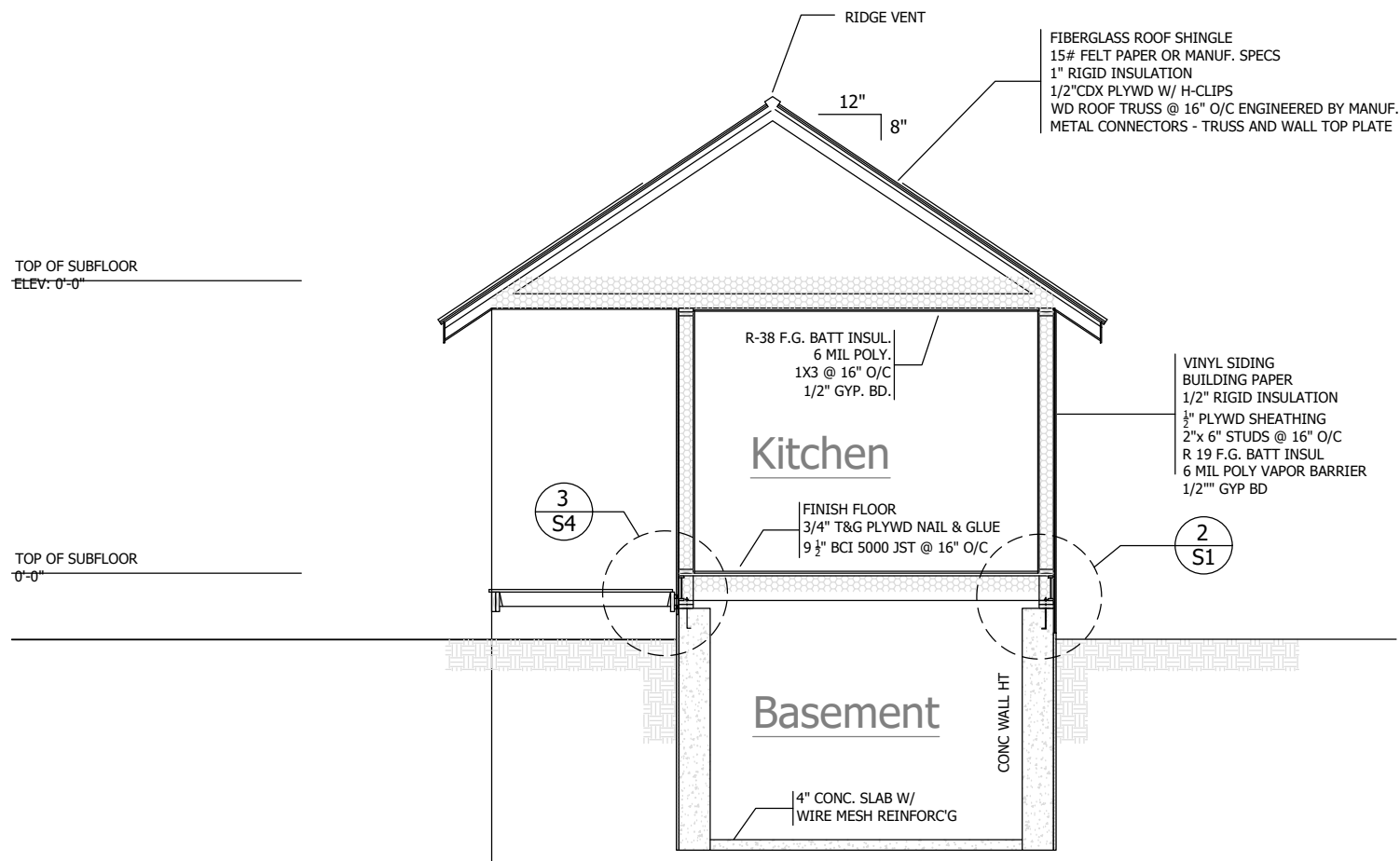
1 CROSS SECTION  
A9 SCALE: 1/4"=1'-0"

ADDITION FOR:  
THE SAMPLES  
1444 MAIN STREET  
SOUTH COUNTY, RI

DATE:  
JANUARY 7, 2026  
DRAWN BY:  
F. J. F. F.  
Hingret Aerial, LLC

SHEET

A9



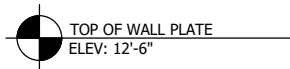
1 CROSS SECTION  
A10 SCALE: 1/4"=1'-0"

ADDITION FOR:  
THE SAMPLES  
1444 MAIN STREET  
SOUTH COUNTY, RI

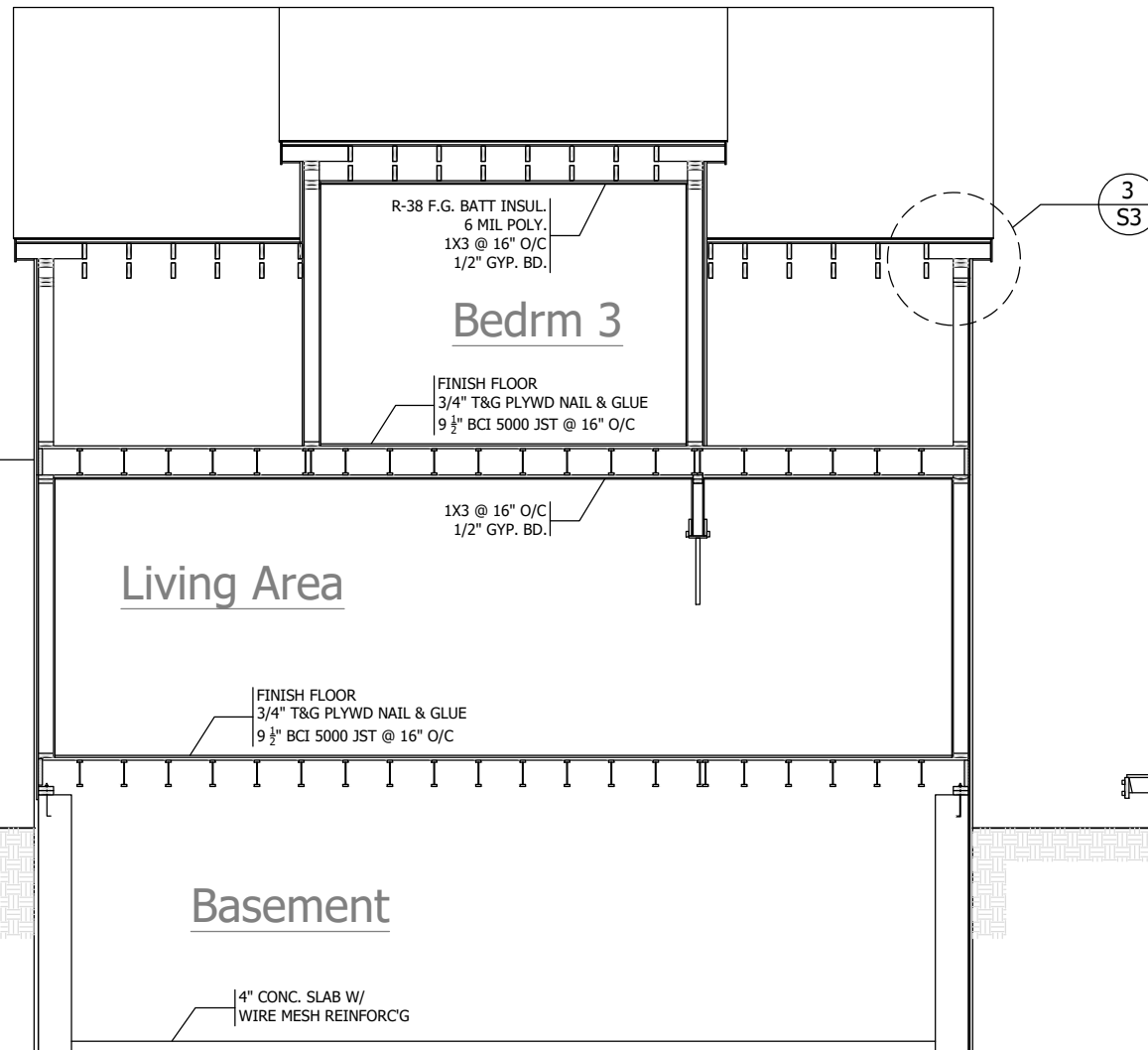
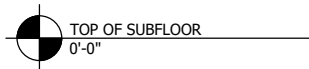
DATE:  
JANUARY 7, 2026  
DRAWN BY:  
F. B. F. B.  
Hingret Aerial, LLC

SHEET

A10



BC SOLID RIM JOIST AS PER  
MANUF.



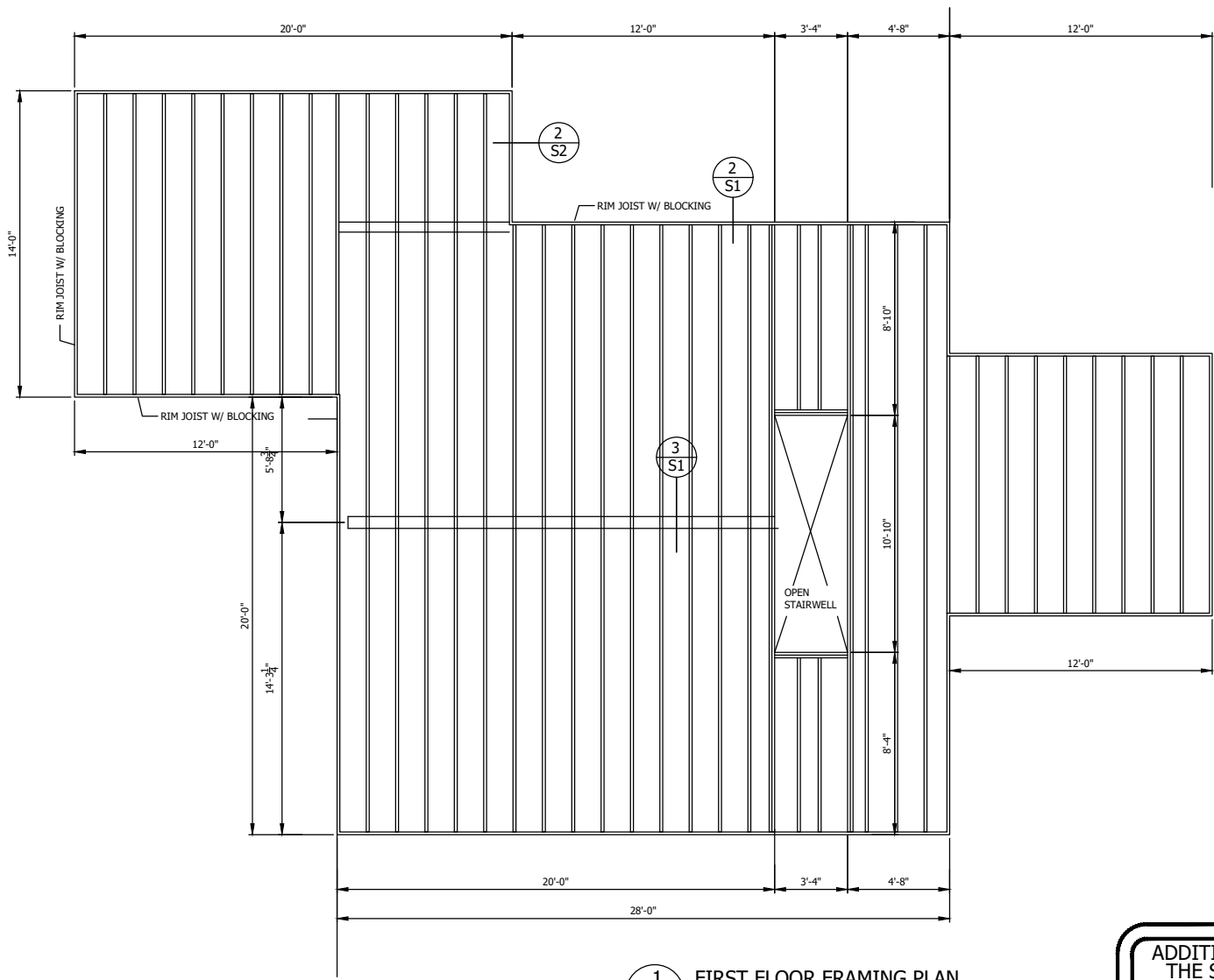
1 SECTION  
A11 SCALE: 1/4"=1'-0"

ADDITION FOR:  
THE SAMPLES  
1444 MAIN STREET  
SOUTH COUNTY, RI

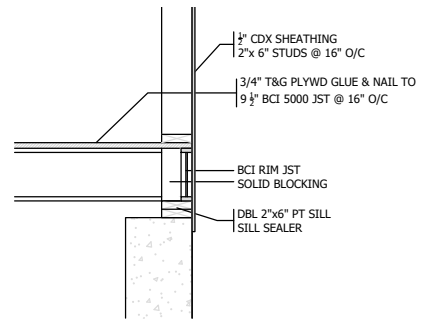
DATE:  
JANUARY 7, 2026  
DRAWN BY:  
F. B. T.  
Hingret Aerial, LLC

SHEET

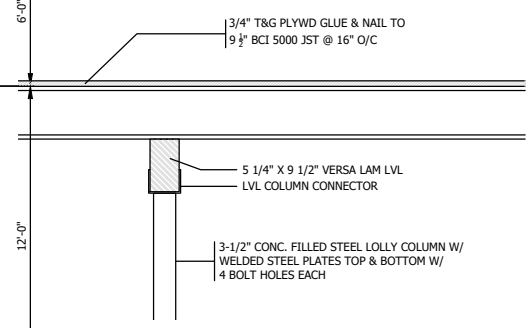
A11



**1**  
**S1** **FIRST FLOOR FRAMING PLAN**  
SCALE: 3/16"=1'-0"

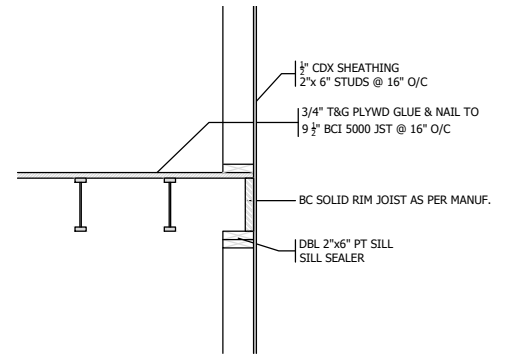
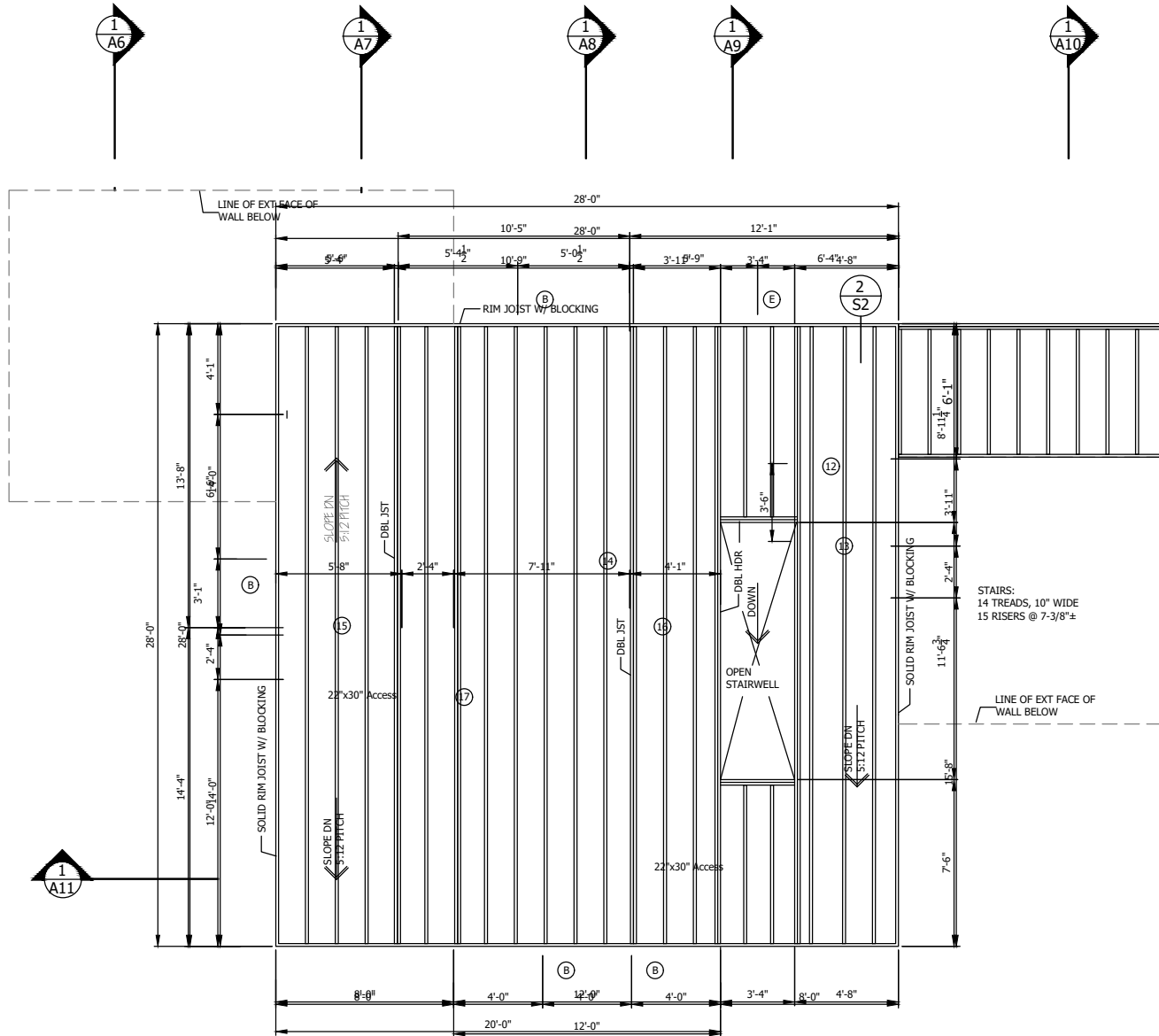


**2**  
**S1** **FLOOR FRAMING DETAIL**  
SCALE: 1/2"=1'-0"



**3**  
**S1** **FLOOR FRAMING DETAIL**  
SCALE: 1/2"=1'-0"

ADDITION FOR: THE SAMPLES 1444 MAIN STREET SOUTH COUNTY, RI		DATE: JANUARY 7, 2026 DRAWN BY: Hinget Aerial, LLC	SHEET <b>S1</b>
--	--	---	--------------------



**2 FLOOR FRAMING DETAIL**  
SCALE: 1/2"=1'-0"

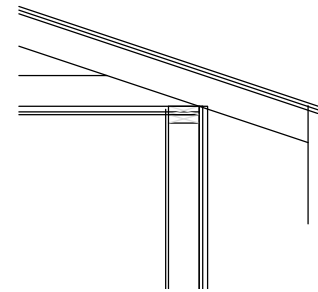
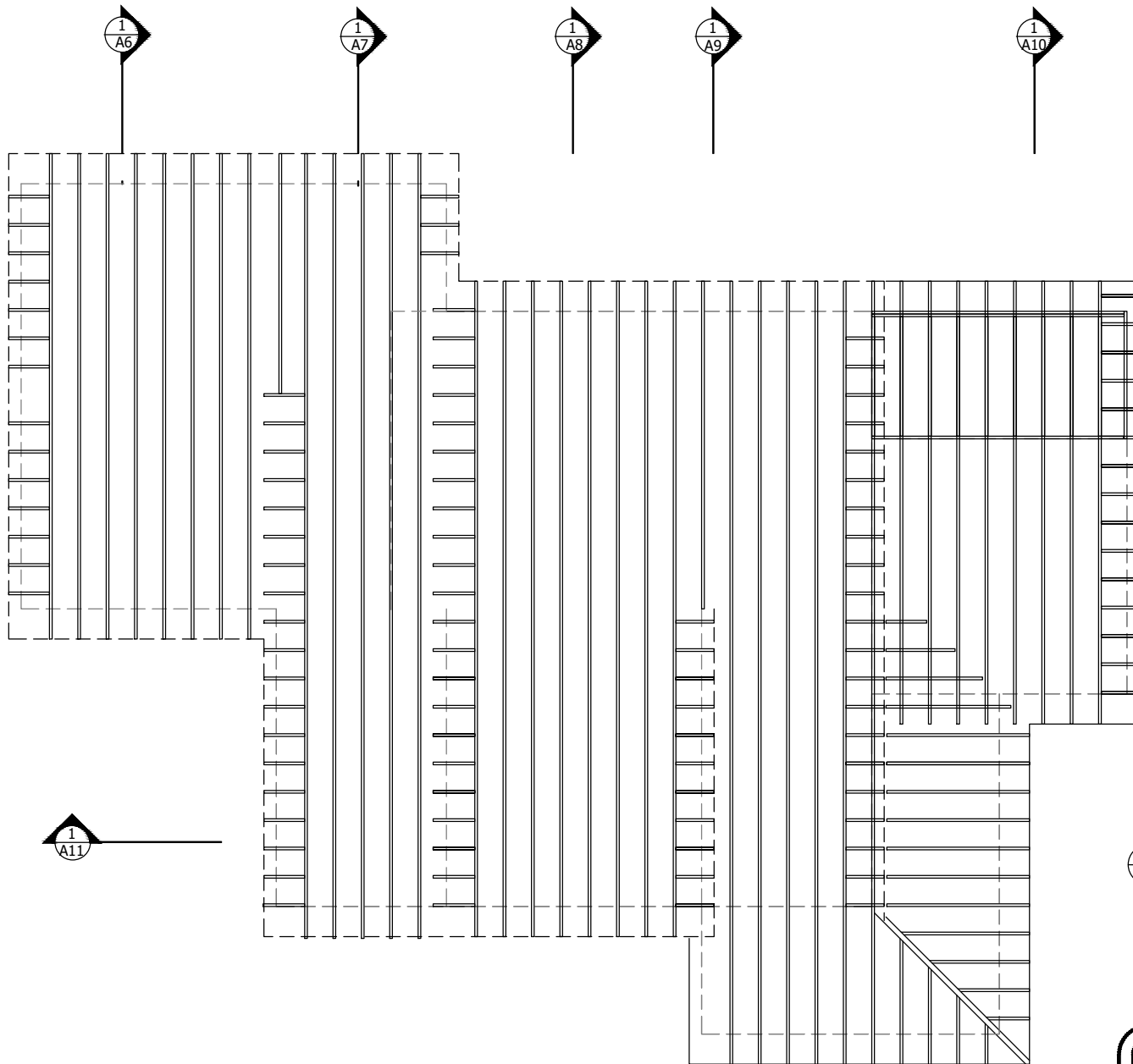
**1 SECOND FLOOR FRAMING PLAN**  
SCALE: 3/16"=1'-0"

ADDITION FOR:  
THE SAMPLES  
1444 MAIN STREET  
SOUTH COUNTY, RI

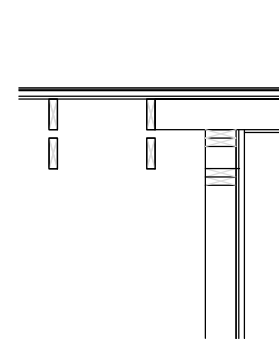
DATE:  
JANUARY 7, 2026  
DRAWN BY:  
F. J. **hinet Aerial, LLC**

SHEET

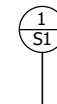
**S2**



2 ROOF FRAMING DETAIL  
S3 SCALE: 1/2"=1'-0"



3 ROOF FRAMING DETAIL  
S3 SCALE: 1/2"=1'-0"



1 ROOF FRAMING PLAN  
S3 SCALE: 3/16"=1'-0"

ADDITION FOR:  
THE SAMPLES  
1444 MAIN STREET  
SOUTH COUNTY, RI

DATE:  
JANUARY 7, 2026  
DRAWN BY:  
FRED  
Hingret Aerial, LLC

SHEET

S3